

# **SPARTITI MUSICALI**

ANTONIO  
RIZZA



# Assomigliano a Gli Addii

Spookendwide

**Agitato** ♩ = 90

M. F. *ottava sopra*

This page contains six systems of musical notation, each consisting of a treble staff and a bass staff. The music is written in a key with one sharp (F#) and a 3/4 time signature. The notation includes various musical elements:

- System 1:** The treble staff begins with a triplet of eighth notes, followed by a half note and a quarter note. The bass staff features a continuous triplet of eighth notes.
- System 2:** The treble staff has a series of quarter notes. The bass staff continues with triplet eighth notes.
- System 3:** Similar to System 2, with quarter notes in the treble and triplet eighth notes in the bass.
- System 4:** The treble staff introduces sixteenth-note triplets. The bass staff continues with triplet eighth notes.
- System 5:** The treble staff features quarter notes with slurs. The bass staff continues with triplet eighth notes.
- System 6:** The treble staff includes sixteenth-note triplets and slurs. The bass staff continues with triplet eighth notes.

This page of musical notation consists of six systems, each with a treble and bass staff. The notation includes various musical elements:

- System 1:** Treble staff has a half note, a quarter note, and a quarter rest. Bass staff has a continuous triplet eighth-note pattern.
- System 2:** Treble staff has a half note, a quarter note, and a quarter rest. Bass staff has a continuous triplet eighth-note pattern.
- System 3:** Treble staff has a half note, a quarter note, and a quarter rest. Bass staff has a continuous triplet eighth-note pattern.
- System 4:** Treble staff has a half note, a quarter note, and a quarter rest. Bass staff has a continuous triplet eighth-note pattern.
- System 5:** Treble staff has a half note, a quarter note, and a quarter rest. Bass staff has a continuous triplet eighth-note pattern.
- System 6:** Treble staff has a half note, a quarter note, and a quarter rest. Bass staff has a continuous triplet eighth-note pattern.

The notation includes various musical symbols such as notes, rests, and triplets. The page is numbered 3 in the top right corner.

This page of musical notation consists of six systems, each with a grand staff (treble and bass clefs). The music is characterized by complex rhythmic patterns, including frequent triplets and sixteenth-note runs. The key signature is one sharp (F#), and the time signature is 4/4. The notation includes various musical symbols such as slurs, accents, and dynamic markings. The piece concludes with a final system featuring a dense, multi-measure rest in the right hand and a final triplet in the left hand.

# Blue Night

Spookendwide

**Andante** ♩ = 85

Archi

In the si-lence fly

6 white sen-sa-tions as ma-ny souls o-ver the world— o-ur lives come to-

10 ge-ther for e-ver I feel you near hea-ve-en's ga-tes are o-pen-ed slow-ly

15 we wa-alk toward new life— I'm in the ro-om a-lo-one with you

19 e-very-y-thing be-co-omes blue night you le-et go-o wi-tho-ut saying no your

23 phra-ses of love are li-ke mu-sic.

Antonio Rizza  
Blue Night  
Anno 2009

29 A moon like a white a - bat-jour in-side a floor of but-ter - flies

Am D Am<sup>7</sup> D

33 bet-ween leaves of sweet me-lan-cho-ly sli-ips my mind my fee-lings are free as hors-

Am D Am<sup>7</sup> D C

38 chair in the wind I fe-el more a-live I'm in the ro-om a - lo - one with you

Bm C<sup>7</sup> Bm<sup>7</sup> E Am E F C

43 e - very - y - thing be - co-omes blue night you le - et go - o wi - tho - ut saying no your

G Am F G Am E F C

47 phra-ses of love are li - ke mu-sic.

G Am F C Am E F C

51

G Am F G Am E F C

55 Is some - thing ver - ry bi - ig

G Am F Gsus<sup>4</sup> G F<sup>7</sup> E<sup>7</sup>

59 that you can - not ex - plain — like the sun in the mor - ning

Am<sup>7</sup> D F D

63 hea - ve - en's ga - tes are o - pen - ed slow - ly we wa - alk toward new life — I'm in the ro - om a -

C<sup>7</sup> Bm C<sup>7</sup> Bm<sup>7</sup> E Am E

68 lo - one with you e - very - y - thing be - co - omes blue night you le - et go - o wi -

F C G Am F G Am E

72 tho - ut saying no your phra - ses of love are li - ke mu - sic.

F C G Am F C Am E

76 you le - et go - o wi -

F C G Am F G Am E

80 tho - ut saying no your phra - ses of love are li - ke mu - sic.

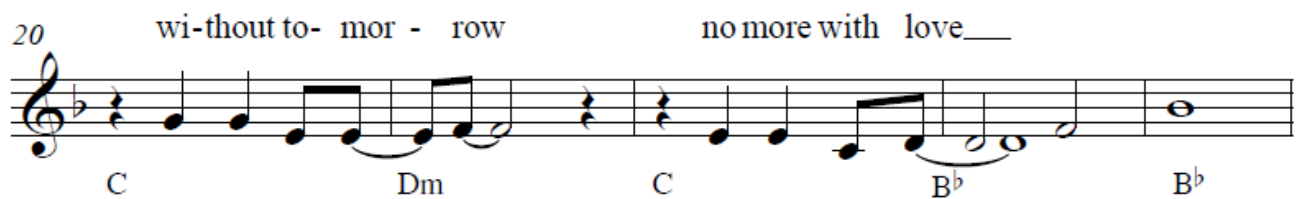
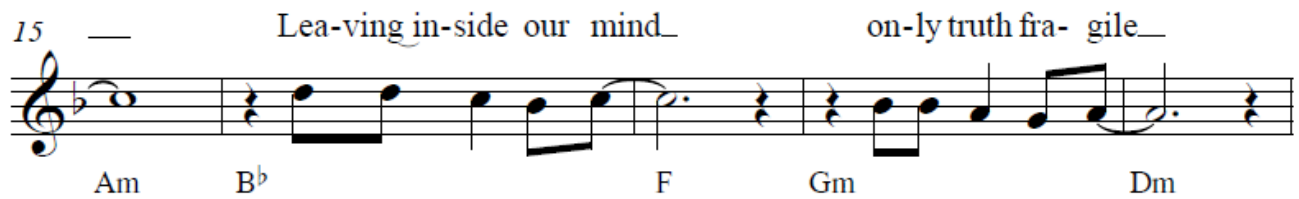
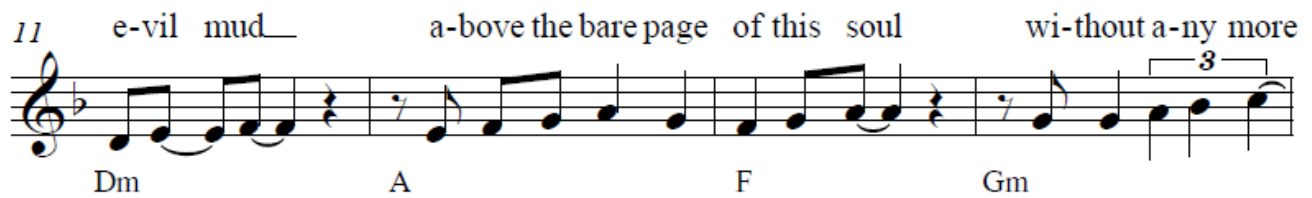
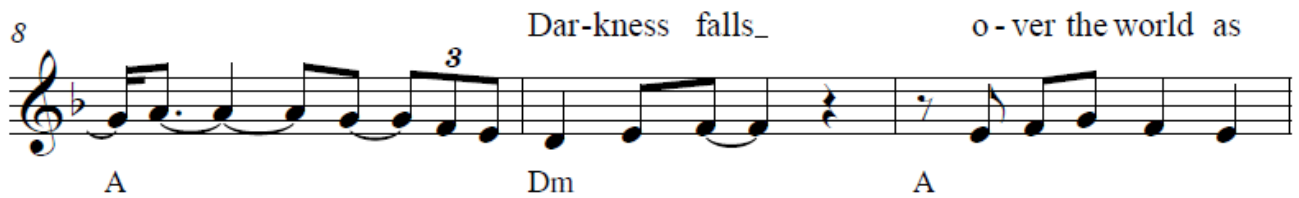
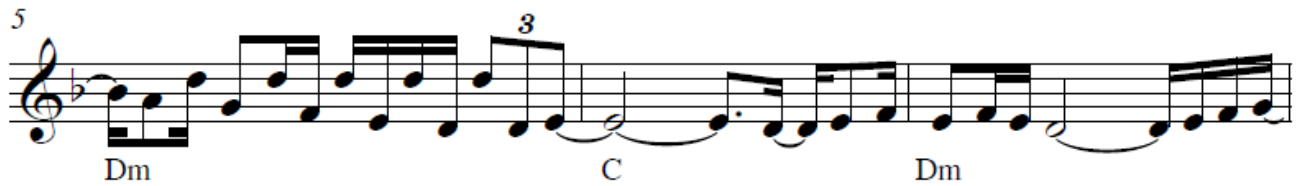
F C G Am F C



# Dark

Spookendwide

Rock ♩ = 116



25 Al-ways bad\_ dressed in me - lan-cho-ly\_ when games de-stroy

Dm A Dm A

29 e-very- thing our swe-et dreams and o - ur poems

F Gm Am B<sup>b</sup>

33 — Some-times a lit-tle wind it dis - solves har-mo-

C Cm dim<sup>6</sup> Gm B<sup>b</sup>m

37 nies are on-ly of e - mo-tion\_ but we are ve-ry

F Cm dim<sup>6</sup> Gm B<sup>b</sup>m


41 sad. A-bove the world

F Dm B<sup>b</sup> C Dm

46 spreads fol-ly of e-vil dark\_ there's no one who come to help

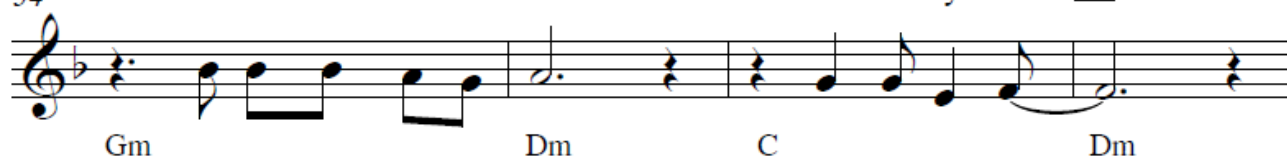
A Dm A F

50 us lone-ly men\_\_ While burnt pieces of life



Gm Am B<sup>b</sup> F

54 are col-lected from the hands how ma-ny times\_\_




Gm Dm C Dm

58 I still have to lose. In this world wi-thout a




C B<sup>b</sup> B<sup>b</sup> B<sup>b</sup>m

62 go - al I feel a sail wi-thout the wind



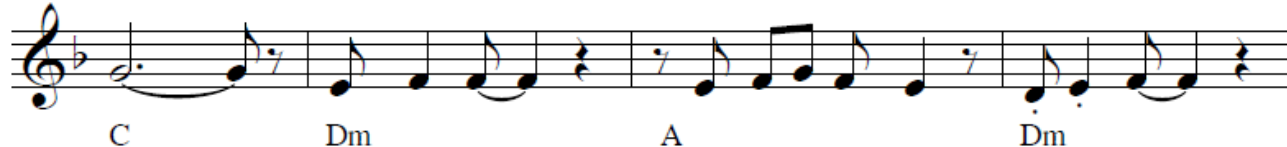
F B<sup>b</sup>m F

65 which no longer know what to do - o\_\_ but on-ly wants to sink a -



A<sup>7</sup> Dm Gm

68 way\_\_ Dar-kness still\_ give me a mo-ment I must think



C Dm A Dm

72 I want to feel this life mine I want to de- cide\_\_

A F Gm Am

76 of my - y life\_\_\_\_\_ Some-times a lit-tle wind

B<sup>b</sup> C Cm dim<sup>6</sup> Gm

80 it dis-solves har-mo-nies are on-ly of e-mo-tion\_

B<sup>b</sup>m F Cm dim<sup>6</sup> Gm

84 but we are ve-ry sad.

B<sup>b</sup>m F Dm Gm<sup>7</sup>

88

C F Dm B<sup>b</sup> C

93

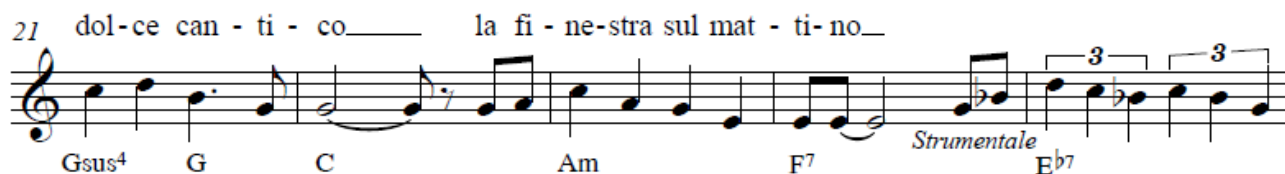
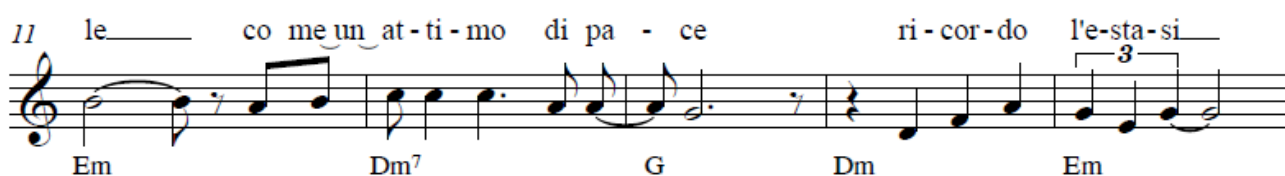
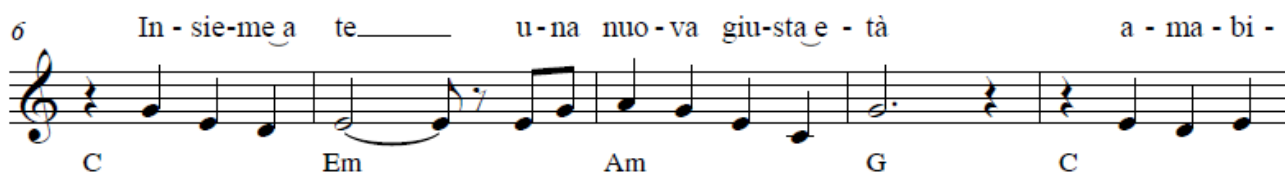
F Dm Gm<sup>7</sup>



# La finestra sul mattino

Spookendwide

Andante ♩ = 85



Antonio Rizza  
La finestra sul mattino  
Anno 2004

31 Scu-sa - mi

C<sup>7</sup> Bm<sup>7</sup> Dm<sup>7</sup> F<sup>7</sup> C

37 se non ca - pi - vo a vol - te sai quel sot - ti - le sen - ti -

Em Am G C Em

42 men-to in-vi-si - bi-le per la ma-no fe - li-ci sot-to il bian-co cie-

Dm<sup>7</sup> G Dm Em F

47 lo e le cor-se feb - bri-li di que-sta mia pri-ma-ve - ra

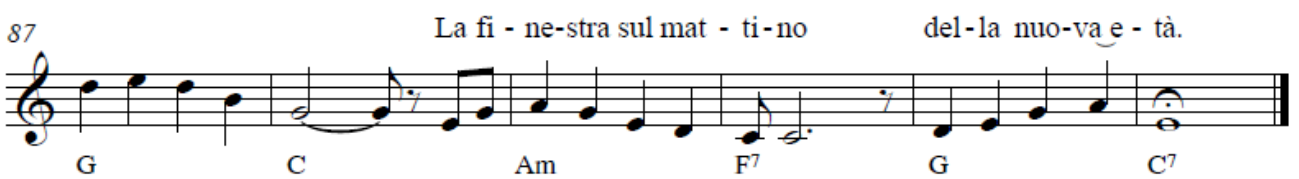
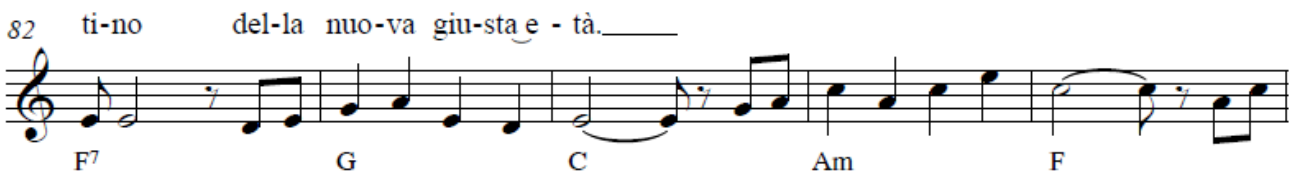
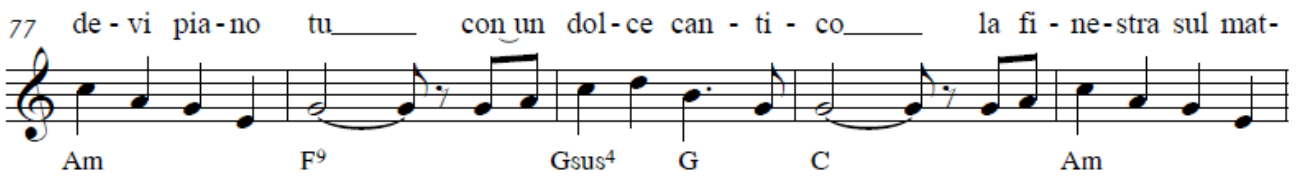
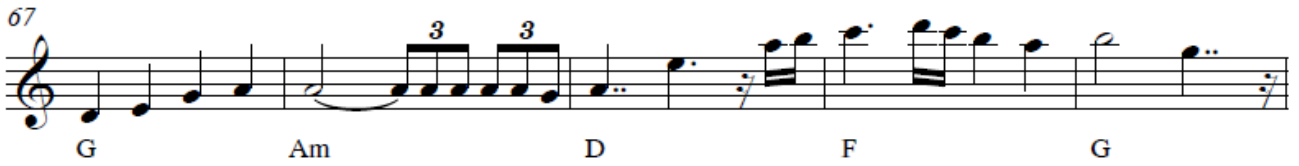
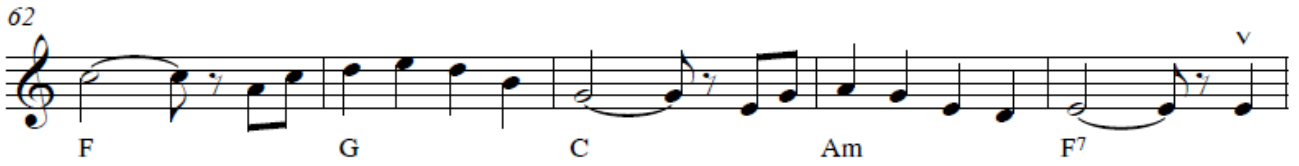
C<sup>7</sup> Am Em F G

52 E di-schiu - de - vi pia-no tu con un dol-ce can - ti - co la fi-

C Am F<sup>9</sup> Gsus<sup>4</sup> G

57 ne-stra sul mat - ti-no del-la nuo-va giu-sta e - tà.

Am F<sup>7</sup> G C Strumentale Am





# Pianissimo

Spookendwide

**Andante** ♩ = 85

Archi

Nel si-len-zio vo-la

u - na ma-gi - a so - lo tu mi sai ca - pi - re men - tre l'e - sta - si mi

6

10 pren - de la ma - no in - sie - me a te e con - fi - ni del cie - lo ed an - co - ra più su

15 sen - za vol - tar - si mai chiu - do la stan - za ri - man - go con te

19 den - tro il si - len - zio che più non ce n'è ti la - sci toc - ca - re non di - ci di no

23 fra - si d'a - mo - re si sciol - go - no già.

Am D Am<sup>7</sup> D Am

D Am<sup>7</sup> D Am

D Am<sup>7</sup> D C<sup>3</sup> Bm<sup>3</sup>

C<sup>7</sup> Bm<sup>7</sup> E Am E<sup>3</sup> F C

G Am F G Am E<sup>3</sup> F C

G Am F C Am D Am<sup>7</sup> D

Antonio Rizza  
Pianissimo  
Anno 2001

29 U - na lu - na fat - ta co-me a-bat-jour bian-ca nel-la not-te blu

Am D Am<sup>7</sup> D

33 guan-cia-li mor-bi-di di ma-lin-co-ni-a e di per - ché van-no a scal-da-re

Am D Am<sup>7</sup> D C

38 il fol-to cri-ne di no-te sem-pli-ci chiu-do la stan-za ri-man-go con te

Bm C<sup>7</sup> Bm<sup>7</sup> E Am E F C

43 den-tro il si-len-zio che più non ce n'è ti la-sci toc-ca-re non di-ci di no

G Am F G Am E F C

47 fra-si d'a-mo-re si sciol-go-no già.

G Am F C Am E F C

51

G Am F G Am E F C

55 È qual-co-sa di spe-cia-le

G Am F Gsus<sup>4</sup> G F<sup>7</sup> E<sup>7</sup>

59 in - fi - ni - to e lim - pi - do\_\_\_ co-me il so - le\_\_\_ del mat-ti - no e con-

Am<sup>7</sup> D F D

63 fi-ni del cie-lo ed an-co-ra più su sen-za vol-tar-si mai\_\_\_ Chiu-do la stan-za ri-

C<sup>7</sup> Bm<sup>7</sup> C<sup>7</sup> Bm<sup>7</sup> E Am E

68 man-go con te den-tro il si - len - zio che più non ce n'è ti la - sci toc - ca - re non

F C G Am F G Am E

72 di - ci di no fra - si d'a - mo - re si sciol - go - no già

F C G Am F C Am E

76 ti la - sci toc - ca - re non

F C G Am F G Am E

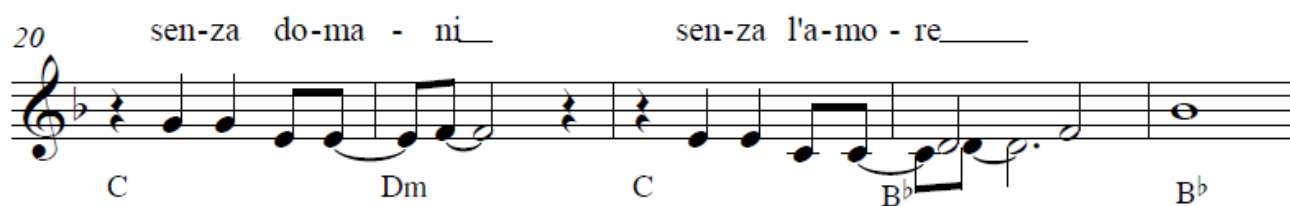
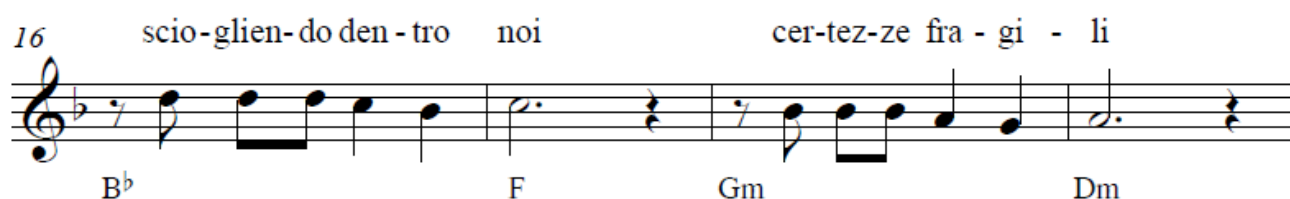
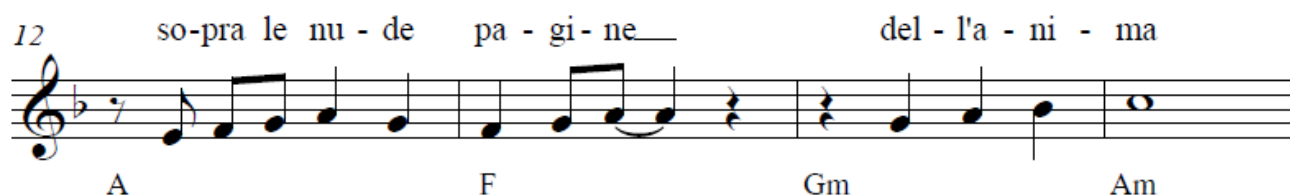
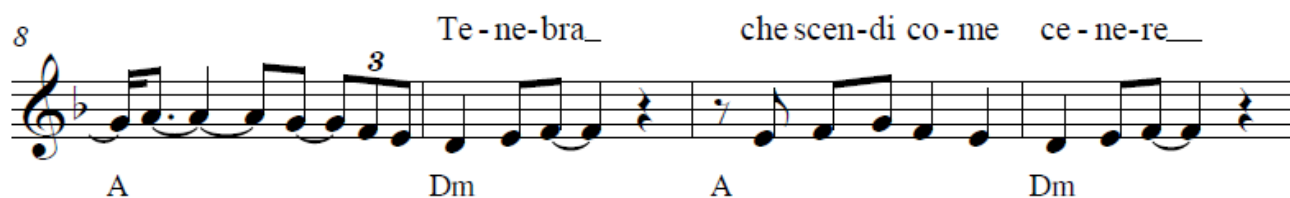
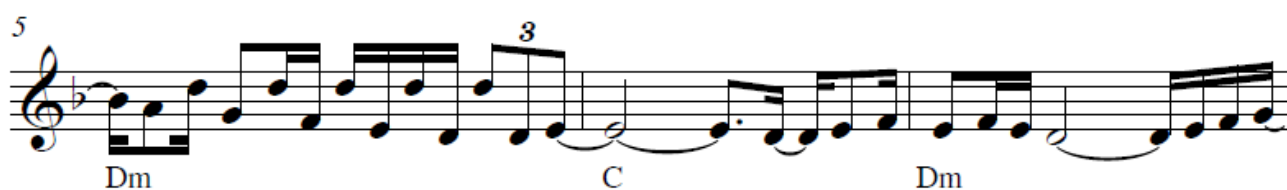
80 di - ci di no fra - si d'a - mo - re si sciol - go - no già.

F C G Am F C

# Tenebra

Spookendwide

Rock ♩ = 116



25 a - vi-da\_\_ ve-sti-ta di ma - lin-co-nia\_\_ gio-can-do sai di -

Dm A Dm A

29 strug-ge-re\_\_ i so-gni lan-gui-di\_\_ e le poe-si - e\_\_

F Gm Am B<sup>b</sup> C

34 a vol-te un po' di ven-to\_\_ dis-sol-ve l'ar-mo - ni - a\_\_

Cm dim<sup>6</sup> Gm B<sup>b</sup>m F

38 è so-lo u-n'e-mo - zio-ne\_\_ ma quan-ta no-stal - gia.

Cm dim<sup>6</sup> Gm B<sup>b</sup>m F

42 Ma-le che\_\_ in-va-di l'a-ria

Dm B<sup>b</sup> C Dm A

47 di paz-zi-a col-pi-sci il cuo-re fra-gi-le\_\_ sen-za pie - tà

Dm A F Gm Am

52 e coc-ci di pas-sio-ne\_\_ rac-col-go-no le ma-ni\_\_

B<sup>b</sup> F Gm Dm

56 ma quan-te vol - te\_\_ mi so-no per - du-to\_\_

C Dm C B<sup>b</sup> B<sup>b</sup>

61 su que-sta na-ve sen-za me-ta\_\_ che non ha vo-glia più del

B<sup>b</sup>m F B<sup>b</sup>m

64 mon-do\_\_ ma so - la-men-te d'af-fon - da - re\_\_

F A<sup>7</sup> Dm

67 lon-ta-no dal-la re-al - tà\_\_ te - ne-bra\_\_ la-scia-mi qual-che

Gm C Dm A

71 at - ti - mo\_\_ vo-glio ca-pi - re se la vi - ta\_\_ che og - gi

Dm A F Gm

75 a - bi - to\_\_\_ è sem-pre mi - a\_\_\_ a vol-te un po' di

Am B<sup>b</sup> C Cm dim<sup>6</sup>

79 ven-to\_\_\_ dis-sol-ve l'ar-mo - ni-a\_\_\_ è so-lo u-n'e- mo-

Gm B<sup>b</sup>m F Cm dim<sup>6</sup>

83 zio - ne\_\_\_ ma quan-ta no-stal - gia

Gm B<sup>b</sup>m F Dm

87

Gm<sup>7</sup> C F Dm B<sup>b</sup>

92

C F Dm

95

Gm<sup>7</sup> C F Dm

98

Dm B $\flat$  C

101

F Dm Gm $^7$

104

C F Dm

107

B $\flat$  C F

110

Dm Gm $^7$  C

113

F Dm B $\flat$  C



# Tristezza

Spookendwide

Andante ♩ = 60

INTRO

P. RE<sup>b</sup> LA<sup>b</sup> SOL<sup>b</sup> LA<sup>b</sup> RE<sup>b</sup> SOL<sup>b</sup> RE<sup>b</sup>

8 Tris - tez - za do - ve sei so che ri - tor - ne - rai da

LA<sup>b</sup> RE<sup>b</sup> SOL<sup>b</sup> 3 LA<sup>b</sup>

12 me e ti as - pet - te - rò sen - za la - cri - me

RE<sup>b</sup> SI<sup>b</sup> 3 MI<sup>b</sup><sub>m</sub> LA<sup>b</sup> 3 RE<sup>b</sup>

17 pia - no bus - se - rai al - la mia por - ta chiu - sa

LA<sup>b</sup> RE<sup>b</sup> Cresc. SOL<sup>b</sup> 3 LA<sup>b</sup>

21 con la spe - ran - za di un te - ne - ro ab - brac - cio

RE<sup>b</sup> SOL<sup>b</sup> RE<sup>b</sup> 3 SOL<sup>b</sup> LA<sup>b</sup>

25 e mi di - rai pa - ro - le fra - gi - li d'a - mo - re

F. MI FA<sup>#</sup><sub>m</sub> LA SI

29 e men - ti - rai di - cen - do non le ho mai det - te

MI FA#m LA SI

33 ri - co - min - cian - do o - gni vol - ta co - me un gio - co

MI FA#m LA SI

37 sen - za rim - pian - ti co - me nien - te fos - se sta - to

MI FA#m LA SI

41 Tris - tez - za a - mi - ca mia non te ne an - da - re res - ta

LA<sup>b</sup> RE<sup>b</sup> SOL<sup>b</sup> LA<sup>b</sup>

45 qui ac - can - to a me tu sai per - ché

RE<sup>b</sup> SI<sup>b</sup> MI<sup>b</sup>m LA<sup>b</sup> RE<sup>b</sup>

50 no non è co - sì non si può di - re so - lo

LA<sup>b</sup> RE<sup>b</sup> SOL<sup>b</sup> LA<sup>b</sup>

54 che mi dis - pia - ce quan - do si a - ma

RE<sup>b</sup> SOL<sup>b</sup> RE<sup>b</sup> SOL<sup>b</sup> LA<sup>b</sup>

58 e già lon - ta - ni so - no i gior - ni che ho vis - su - to

F. MI FA<sup>#m</sup> LA SI

62 sfo - glian - do im - ma - gi - ni ri - ve - do il tuo bel vi - so

MI FA<sup>#m</sup> LA SI

66 che can - cel - la - va den - tro tut - ta la pa - u - ra

MI FA<sup>#m</sup> LA SI

70 e so - lo a - des - so mi ren - do con - to

Dim. MI FA<sup>#m</sup> LA SI

74

M. F. CADENZA



# Vicino a te

Spookendwide

Lento espressivo ♩ = 60

INTRO

M.F.

SI<sup>b</sup> SOL m SI<sup>b</sup> SOL m

5 Se co - sì fos - se fa - ci - le e ve - ro far ri - na - sce - re u - na

SI<sup>b</sup> RE m MI<sup>b</sup>

8 vi - ta co - me sve - gliar - la da un so - gno mal - va - gio

SI<sup>b</sup> SOL m MI<sup>b</sup>

11 pren - den - do a pu - gni il sor - do des - ti - no sen - za bi - so - gno di

SI<sup>b</sup> FA SOL m

14 cre - de - re in ques - to di - o giu - ro che lo vor -

MI<sup>b</sup> FA FA MI<sup>b</sup>

18 - rei fos - se l'ul - ti - ma co - sa al mon - do lo vor - rei

SI<sup>b</sup> RE<sup>b</sup> SI<sup>b</sup>

Antonio Rizza  
Vicino a te  
Anno 2001

21 Se co - sì fos - se fa - ci - le e ve - ro a mi - ti - ga - re

SI<sup>b</sup> RE m MI<sup>b</sup>

24 l'a - ni - ma nel - le av - ver - si - tà im - pos -

SI<sup>b</sup> FA SOL m

27 - si - bi - li. E - d io che no - n ho vi - ci - no te

FA FA F. SI<sup>b</sup> FA

31 ques - ta not - te scen - de - rà più scu - ra e - d io co - me pos - so

LA<sup>b</sup> MI<sup>b</sup> SI<sup>b</sup>

34 dir - te - lo se le pa - ro - le non san - no vo - la - re

FA LA<sup>b</sup> SI<sup>b</sup>

37 Dan - za coi bat - ti - ti del tu - o cuo - re di ques - ta vi - ta ap -

M.F. SOL m MI<sup>b</sup> SI<sup>b</sup>

40 - prez - za il sa - po - re la - scia che il tem - po dis - chiu - da 'l do - ma - ni. E -

FA 9 SOL m MI<sup>b</sup> Cresc.

43 - d i - o che no - n ho vi - ci - no te ques - ta not - te scen - de - rà più

F. SI<sup>b</sup> FA LA<sup>b</sup>

46 scu - ra e - d i o co - me pos - so dir - te - lo se

MI<sup>b</sup> SI<sup>b</sup> FA

49 le pa - ro - le non san - no vo - la - re ol - tre ques - to dis - pe - ra - to

LA<sup>b</sup> SI<sup>b</sup> MI<sup>b</sup> 3 dim

52 mon - do do - ve non c'è do - lo - re.

SI<sup>b</sup> MI<sup>b</sup> 9 FA SI<sup>b</sup> FA

57

MI<sup>b</sup> 9 SI<sup>b</sup> SI<sup>b</sup> FA

61 Dan - za coi bat - ti - ti del tu - o cuo - re

MI<sup>b</sup> 9 SOL m MI<sup>b</sup>

64 di ques - ta vi - ta ap - prez - za il sa - po - re la - scia che il tem - po dis -

SI<sup>b</sup> FA 9 SOL m

67 - chiu - da 'l do - ma - ni. E - d io che no - n ho vi - ci - no te

MI<sup>b</sup> Cresc. SI<sup>b</sup> F. FA

70 ques - ta not - te scen - de - rà più scu - ra e - d io co - me pos - so

LA<sup>b</sup> MI<sup>b</sup> SI<sup>b</sup>

73 dir - te - lo se le pa - ro - le non san - no vo - la - re

FA LA<sup>b</sup> SI<sup>b</sup>

76

MI<sup>b</sup> SI<sup>b</sup> Rall. MI<sup>b</sup> 3 dim SI<sup>b</sup>



# **SPARTITI MUSICALI**

PUBBLICAZIONE  
03 LUGLIO 2021